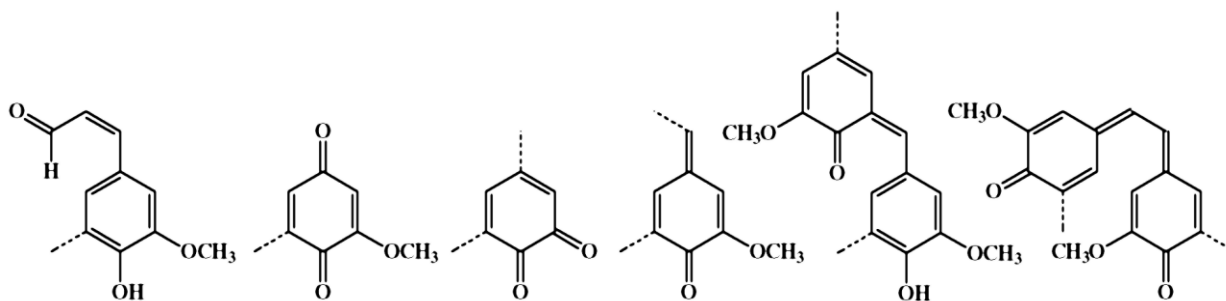


# Lignin Derived Chromophoric and Leucochromophoric Structures And Their Associated Absorbances

## Chromophoric Structures:



coniferaldehyde

*p*-quinone

*o*-quinone

*p*-quinone  
methide

*o*-quinone  
methide

*p,p'*-stilbene  
quinone

(~340 nm)

(420–460 nm)

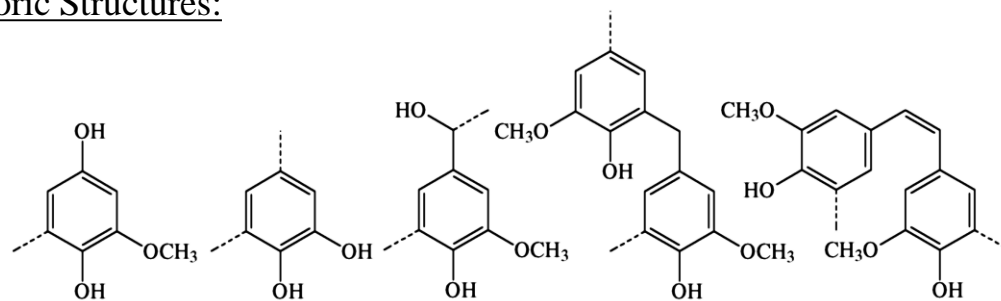
(500–580 nm)

(~310 nm)

(~400 nm)

(~478 nm)

## Leucochromophoric Structures:



hydroquinone

catechol

*p*-hydroxy

diphenylmethane

dihydroxystilbene

benzyl alcohol

(330 nm)